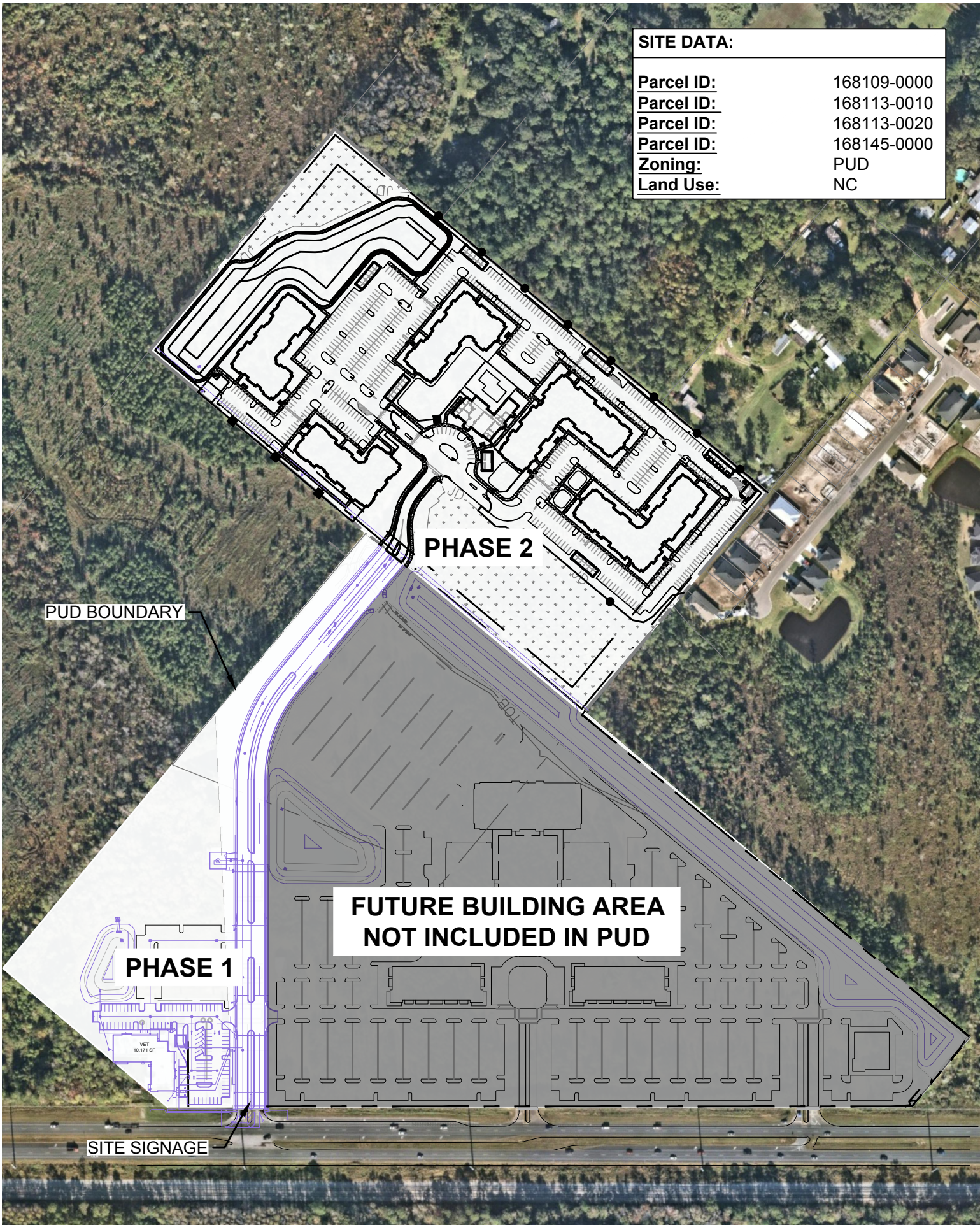


SITE DATA:	
Parcel ID:	168109-0000
Parcel ID:	168113-0010
Parcel ID:	168113-0020
Parcel ID:	168145-0000
Zoning:	PUD
Land Use:	NC



**FUTURE BUILDING AREA
NOT INCLUDED IN PUD**

PHASE 2 SITE DATA:

Parcel ID: 168109-0000
Parcel Area: ~ 21.12 ac
Zoning: PUD
Land Use: NC

Minimum Front Yard: 20 Feet
Minimum Side Yard: 35 Feet
Minimum Rear Yard: 10 Feet

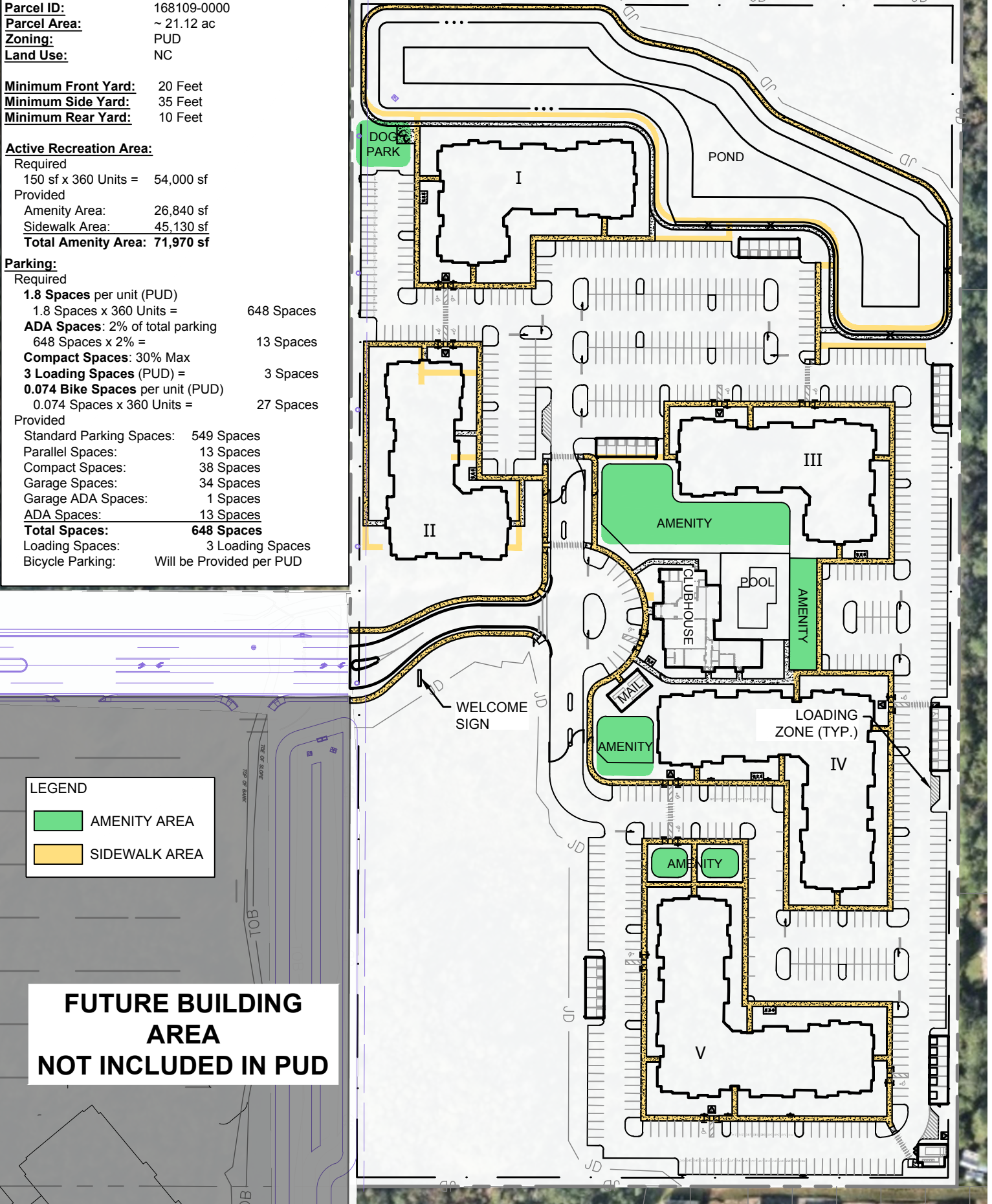
Active Recreation Area:

Required
 150 sf x 360 Units = 54,000 sf
 Provided
 Amenity Area: 26,840 sf
 Sidewalk Area: 45,130 sf
Total Amenity Area: 71,970 sf

Parking:

Required
1.8 Spaces per unit (PUD)
 1.8 Spaces x 360 Units = 648 Spaces
ADA Spaces: 2% of total parking
 648 Spaces x 2% = 13 Spaces
Compact Spaces: 30% Max
3 Loading Spaces (PUD) = 3 Spaces
0.074 Bike Spaces per unit (PUD)
 0.074 Spaces x 360 Units = 27 Spaces
 Provided
 Standard Parking Spaces: 549 Spaces
 Parallel Spaces: 13 Spaces
 Compact Spaces: 38 Spaces
 Garage Spaces: 34 Spaces
 Garage ADA Spaces: 1 Spaces
 ADA Spaces: 13 Spaces
Total Spaces: 648 Spaces
 Loading Spaces: 3 Loading Spaces
 Bicycle Parking: Will be Provided per PUD

PROPERTY BOUNDARY



LEGEND

- AMENITY AREA
- SIDEWALK AREA

FUTURE BUILDING AREA NOT INCLUDED IN PUD

PHASE 1 SITE DATA:

Parcel ID: 168113-0020
Parcel ID: 168145-0000
Parcel ID: 168113-0010
Parcel Area: ~ 9.91 ac
Zoning: PUD
Land Use: NC

Minimum Front Yard: 0 Feet
Minimum Side Yard: 0 Feet
Minimum Rear Yard: 10 Feet

Parking:
1 Space per 300 SF of GFA

PHASE 2

PROPERTY BOUNDARY

**FUTURE BUILDING
AREA
NOT INCLUDED IN PUD**

PHASE 1

VET
10,171 SF

SITE SIGNAGE