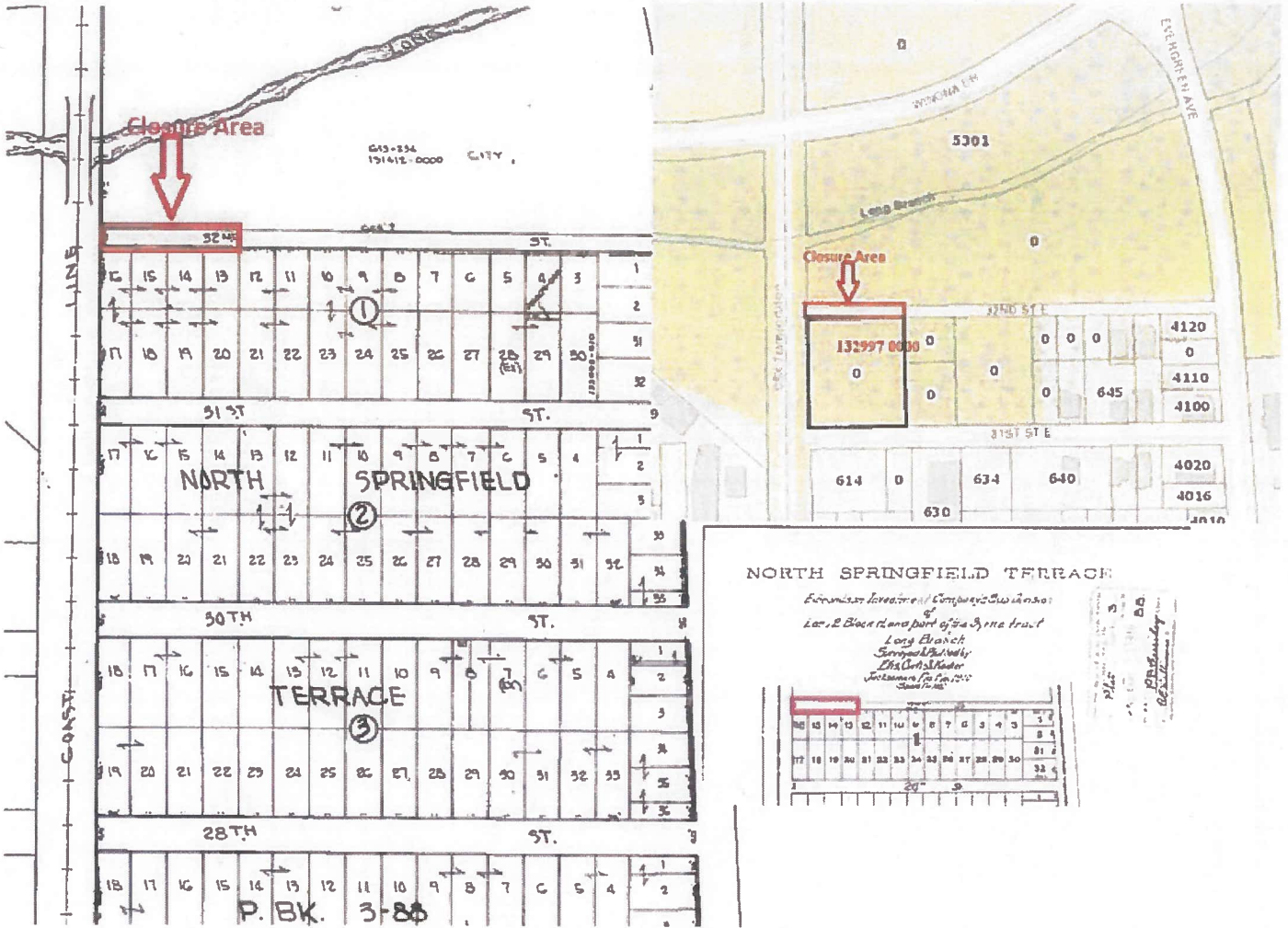


Satellite Aerial – Aerial landscape view 32nd Street Right of Way Closure





RE# 132997-0000 for location purposes only

That portion of 32nd Street (a 20 foot, right of way), Lying North of Lots 13 to 16, Block 1, as shown on the Plat of North Springfield Terrace, Plat Book 3, page 88, all of the Current Public Records, of Duval County, Florida.

APPROVED
 DESCRIPTION AGREES
 WITH MAP
 CITY ENGINEERS OFFICE
 TOPO/SURVEY BRANCH

By SCC Date 2/23/22

EXHIBIT "A"